



Critical Environment Solutions Ltd

CLEANROOM GARMENT DIRECTORY

Contents

Garment Style References:	Page 2
Garment Descriptions:	Pages 3 - 15
Data Sheets:	Pages 16 – 20

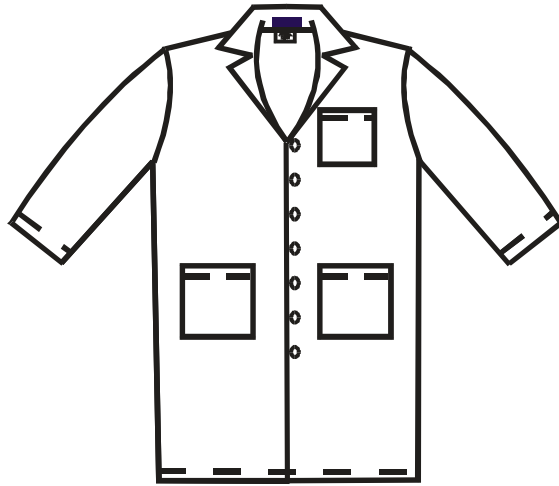


Critical Environment Solutions Ltd

Style	Description
MOC001	Moonshot Coat Stud Front/V Neck/Open Wrist/1 x Top Pocket Left Breast/2 x Bottom Pockets
MOC002	Moonshot Coat Stud Front/stud Wrist/1 x Top Pocket Left Breast/2 x Bottom Pockets
CLC001	Classic Coat Poly Zip/Stud Wrist/Stud Neck/Male Fastening
CLC002	Classic Coat Poly Zip Front/Stud Neck/ESD Wrist/Male Fastening
ALB001	Albany Coat Poly Zip Front/Stud Wrist
SPJ001	Spaceprobe Jacket, Penloop 4 on left breast, Navy Lycra wrist
NTU001	Neptune Tunic Round Neck/Stud Shoulder/Long Sleeve/ Stud Wrist
NTU002	Neptune Tunic Round Neck/Stud Shoulder/Long Sleeve/ Lycra wrist
NTR001	Neptune Trousers Tie Waist/Stud Ankle
NTR002	Neptune Trousers Tie Waist/Lycra Wrist
STC001	Coverall Poly Zip Front/Stud Wrist/Stud Ankle/Elastic Back
STC002	Coverall Poly Zip Front/Stud Wrist/Stud Ankle/No Elastic Back
STC003	Coverall Poly zip front/!Stud Fast Ankle/ESD cuff/elastic back
STC004	Coverall Poly zip front/ESD cuff /stud ankle/No elastic back
STH002	Starline Hood 2 Stud Front/Horizontal Stud Back/Vertical Stud Back
STH003	Starline Hood 2 Mesh Earpieces /Stud Front/Horizontal Stud Back/Vertical Stud Back
SKO001	Skylab Overshoe Flat Sole/Elastic Top/Elastic Ankle/Elastic Bridge
STO001	Starline Overboot+ Crepe Sole
STO009	Crepe sole Tape Tie top Buckle Bridge Strap

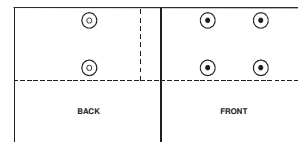
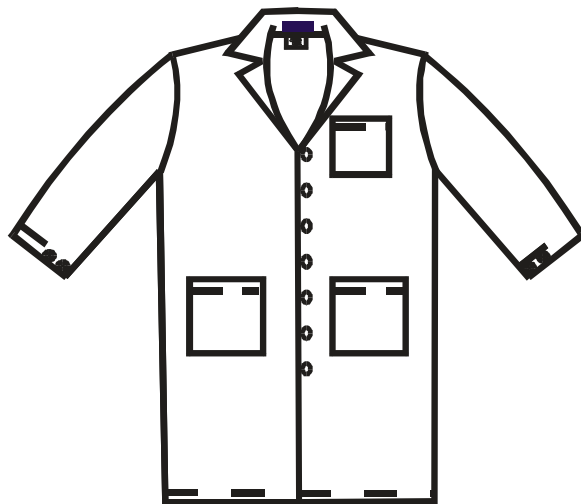
MOC001

- STUD FRONT
- V NECK
- OPEN WRIST
- 1 X TOP POCKET LEFT BREAST & 2 X BOTTOM POCKETS



MOC002

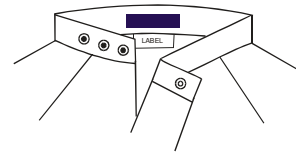
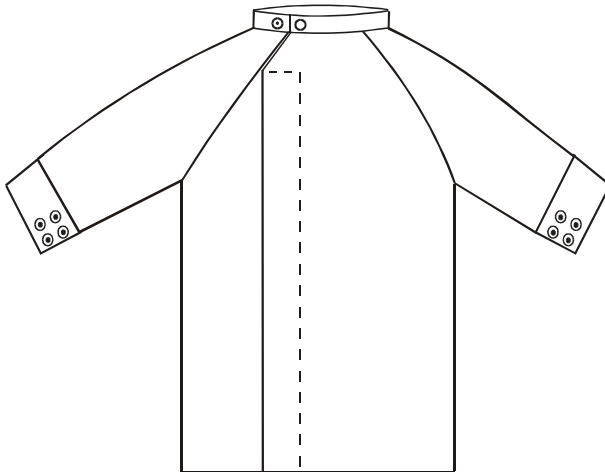
- STUD FRONT
- V NECK
- STUD FASTENING WRIST
- 1 X TOP POCKET LEFT BREAST & 2 X BOTTOM POCKETS



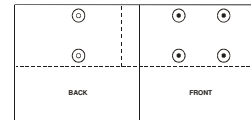
STUD FASTENING WRIST

CLC001

- ZIP FASTENING FRONT
- MANDARIN COLLAR
- STUD NECK/MALE FASTENING
- STUD FASTENING WRIST



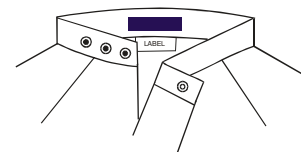
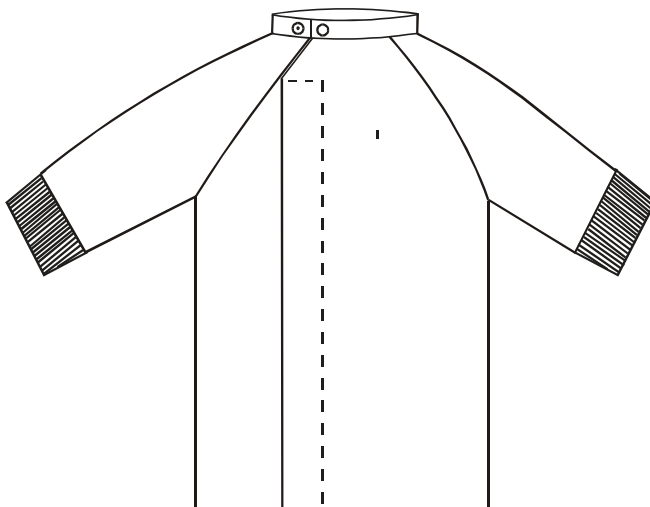
MANDARIN COLLAR



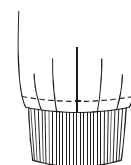
STUD FASTENING WRIST

CLC002

- ZIP FASTENING FRONT
- MANDARIN COLLAR
- STUD NECK/MALE FASTENING
- ESD WRIST



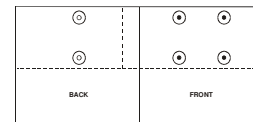
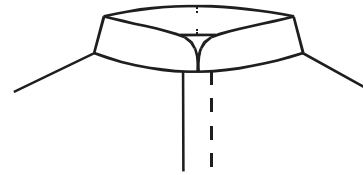
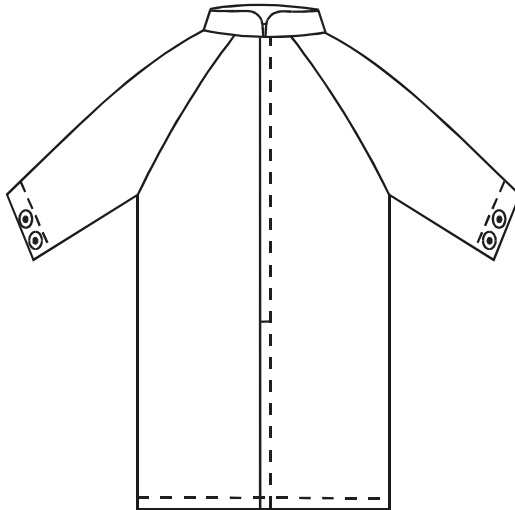
MANDARIN COLLAR



ESD WRIST

ALB001

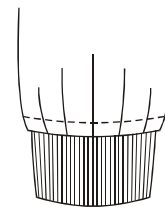
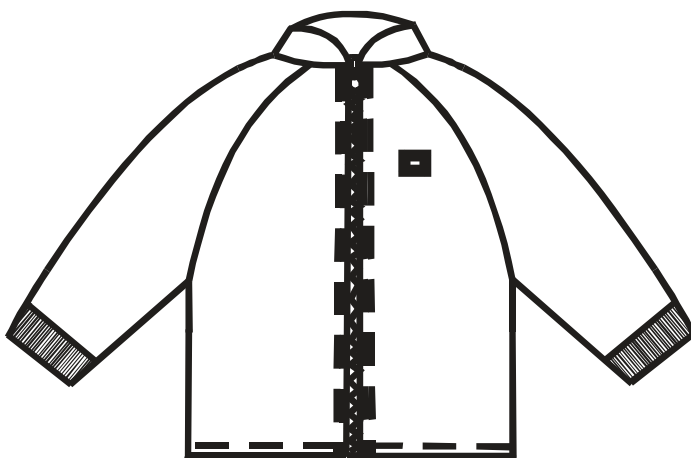
- CENTRE ZIP FRONT
- STUD FASTENING WRIST



STUD FASTENING WRIST

SPJ001

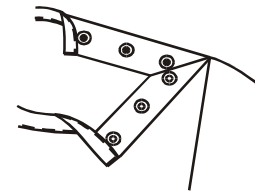
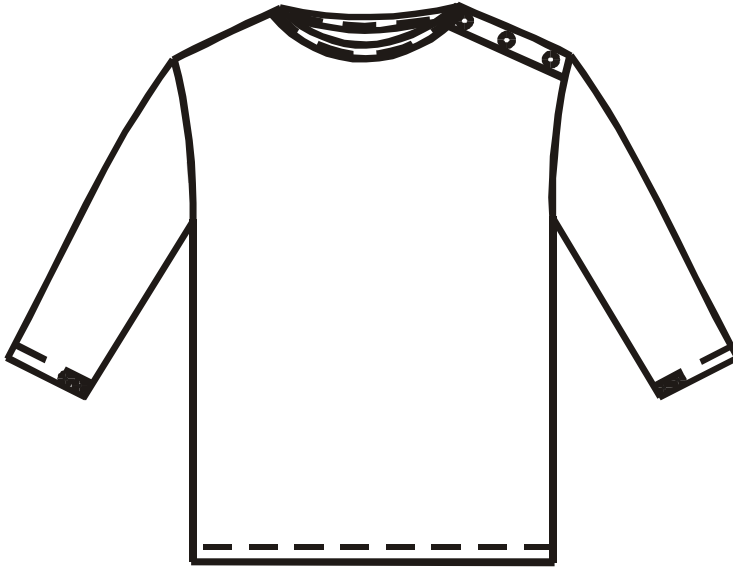
- CENTRE ZIP FRONT
- NAVY LYCRA WRIST
- PEN LOOP 4 ON LEFT BREAST



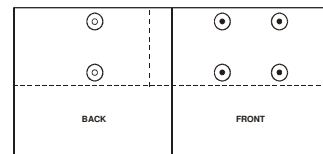
LYCRA WRIST

NTU001

- ROUND NECK
- STUD FASTENING WRIST
- STUD FASTENING SHOULDER



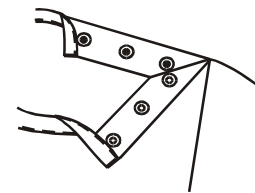
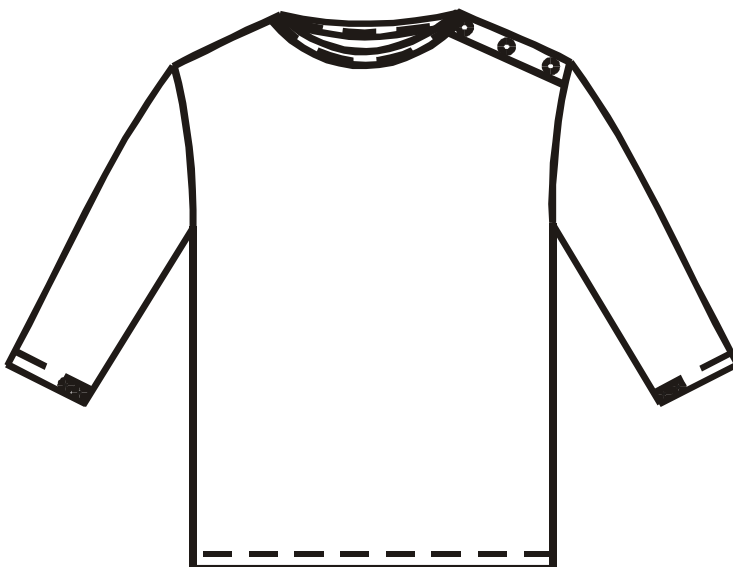
STUD FASTENING SHOULDER



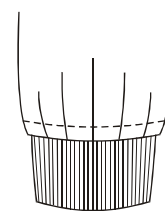
STUD FASTENING WRIST

NTU002

- ROUND NECK
- STUD FASTENING WRIST
- STUD FASTENING SHOULDER



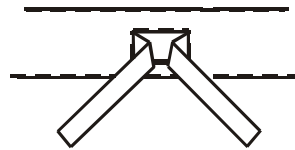
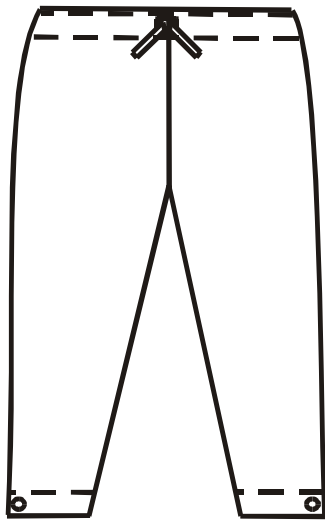
STUD FASTENING SHOULDER



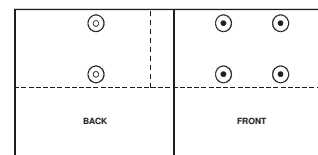
LYCRA WRIST

NTR001

- TIE TAPE WAIST
- STUD FASTENING ANKLE
- STUD FASTENING SHOULDER



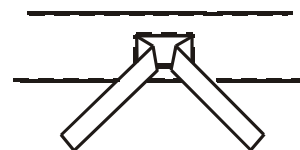
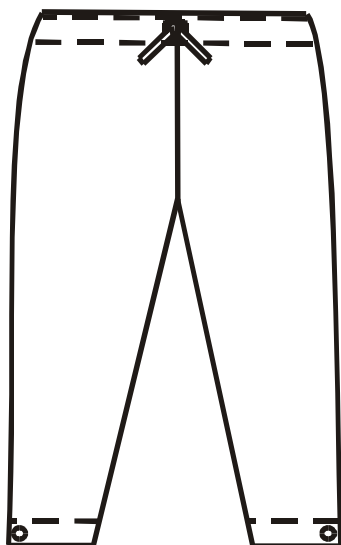
TIE TAPE WAIST



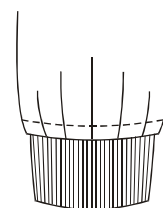
STUD FASTENING ANKLE

NTR002

- TIE TAPE WAIST
- LYCRA ANKLE
- STUD FASTENING SHOULDER



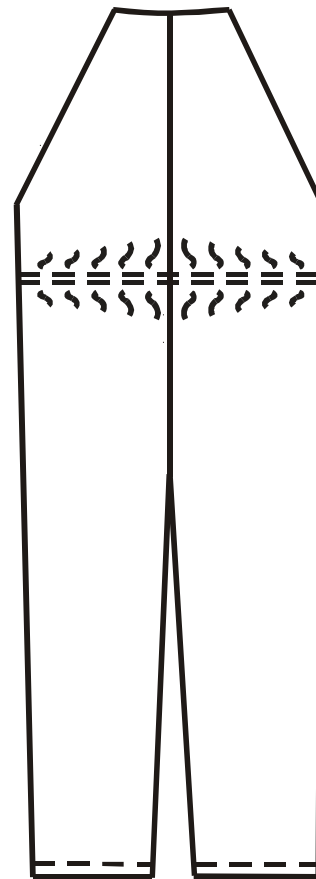
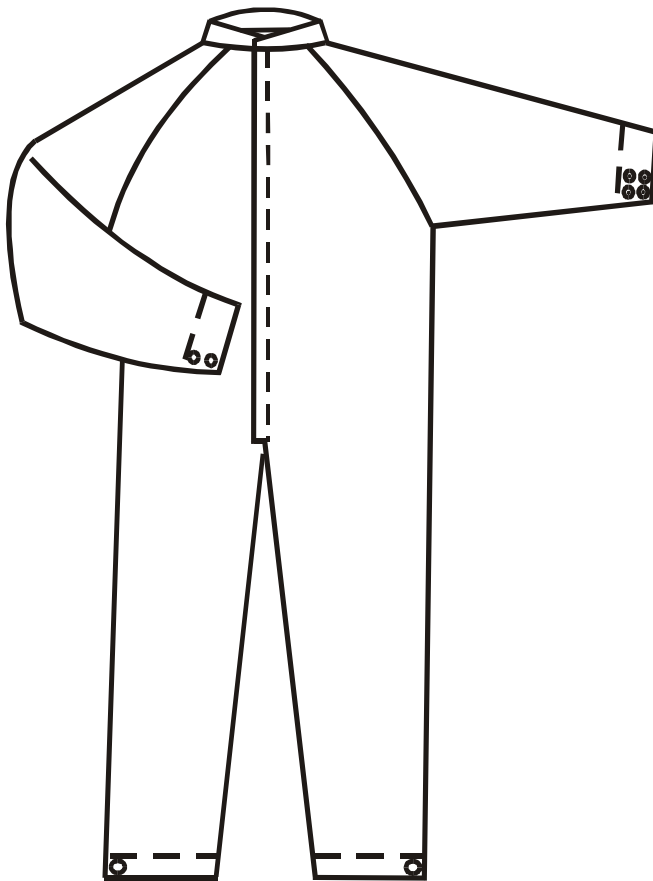
TIE TAPE WAIST



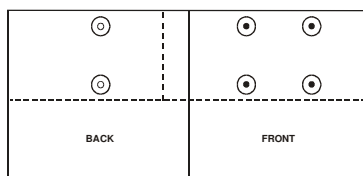
LYCRA WRIST

STC001

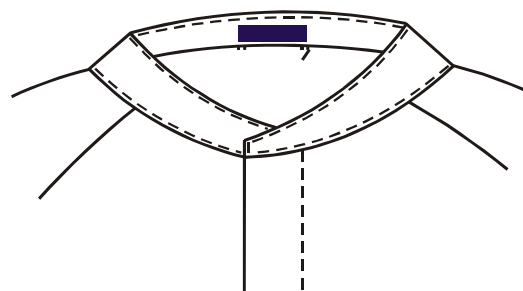
- POLY ZIP FRONT
- STUD WRIST & STUD ANKLE
- ELASTIC BACK



ELASTIC BACK



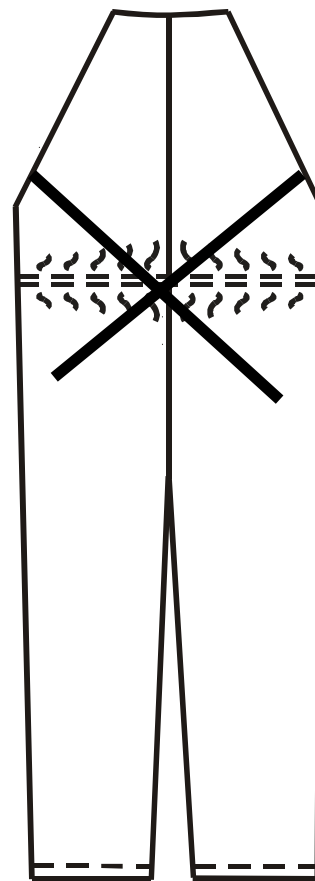
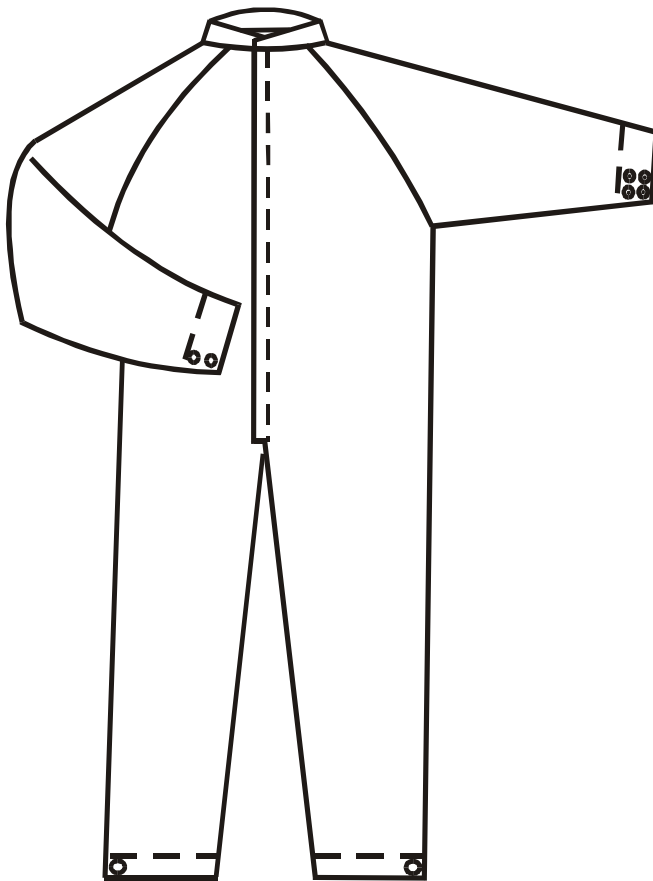
STUD FASTENING WRIST



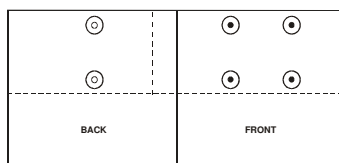
CLOSED COLLAR

STC002

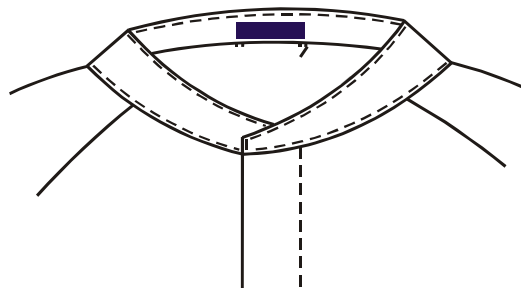
- POLY ZIP FRONT
- STUD WRIST & STUD ANKLE
- NO ELASTIC BACK



NO ELASTIC BACK



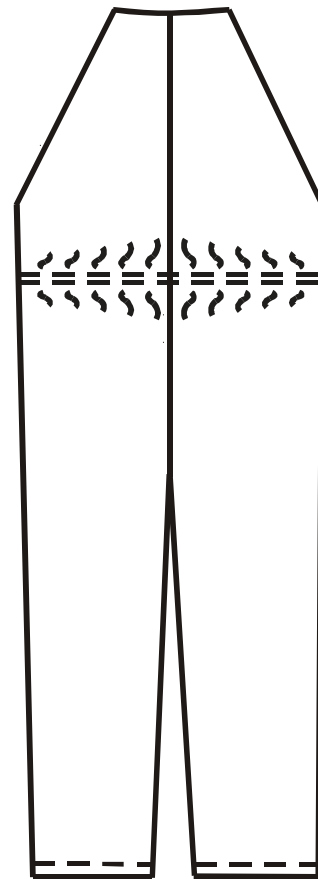
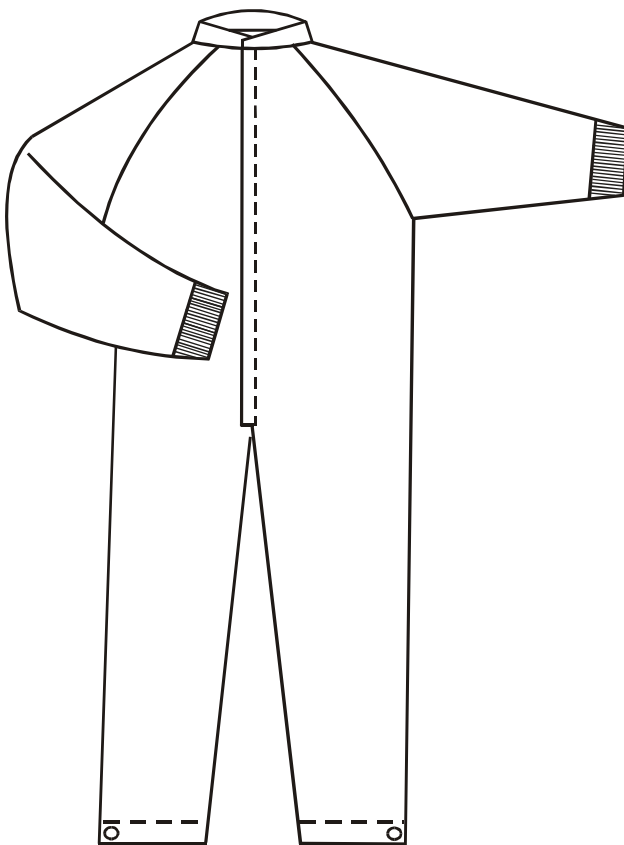
STUD FASTENING WRIST



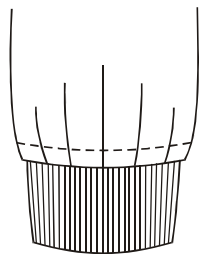
CLOSED COLLAR

STC003

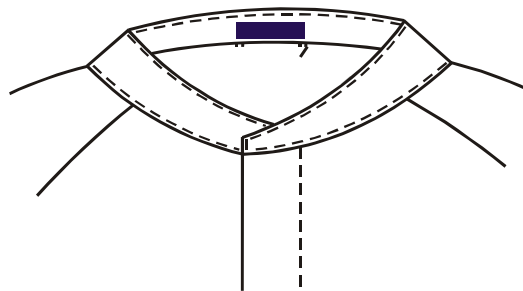
- POLY ZIP FRONT
- ESD WRIST & STUD ANKLE
- ELASTIC BACK



ELASTIC BACK



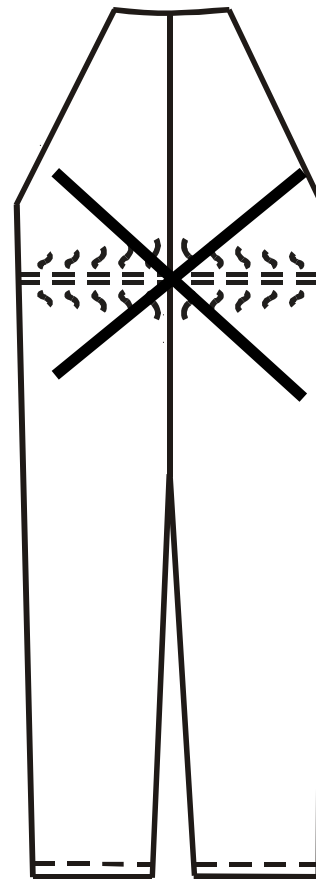
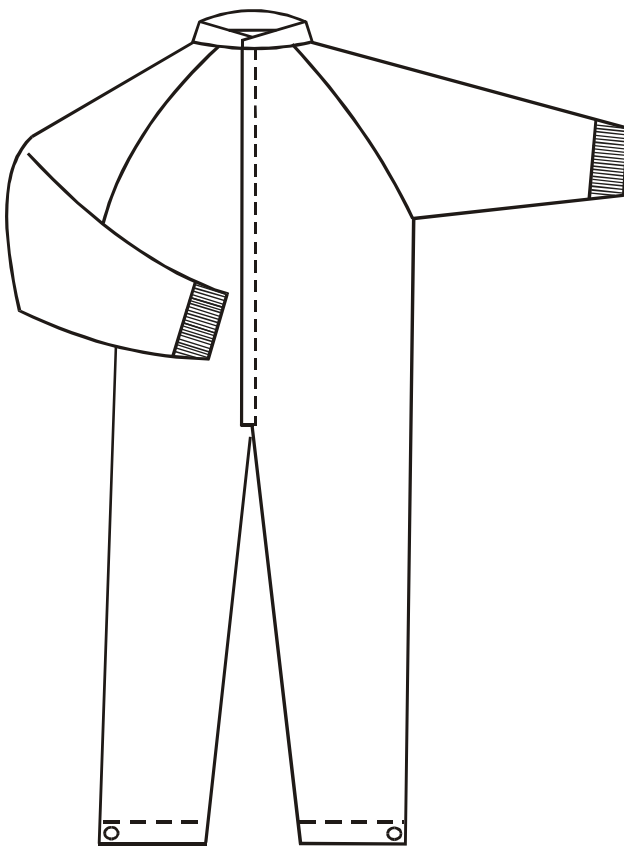
ESD WRIST



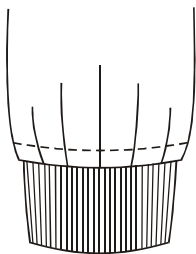
CLOSED COLLAR

STC004

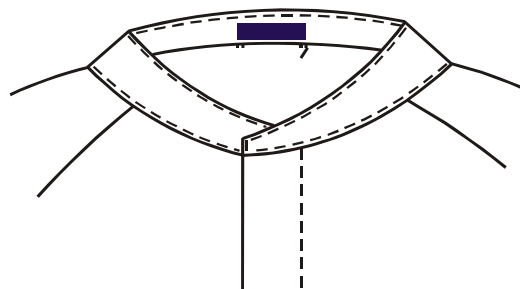
- POLY ZIP FRONT
- ESD WRIST & STUD ANKLE
- NO ELASTIC BACK



NO ELASTIC BACK



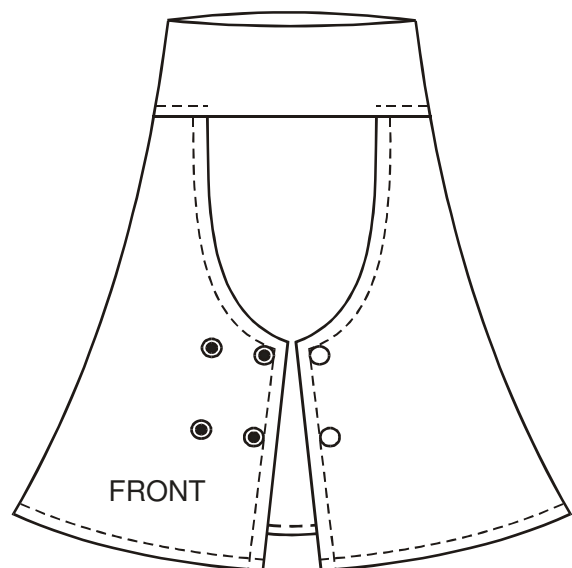
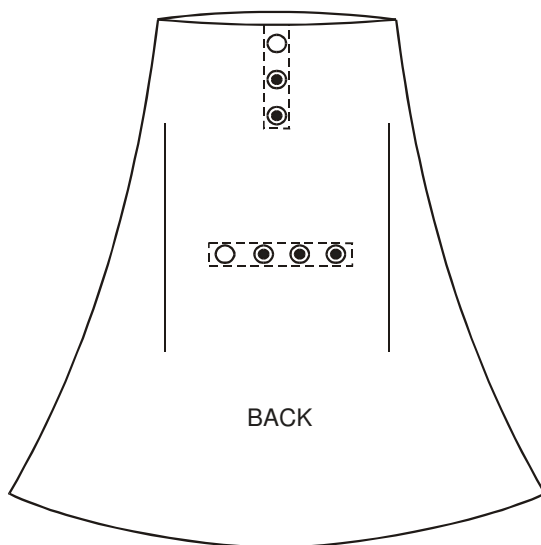
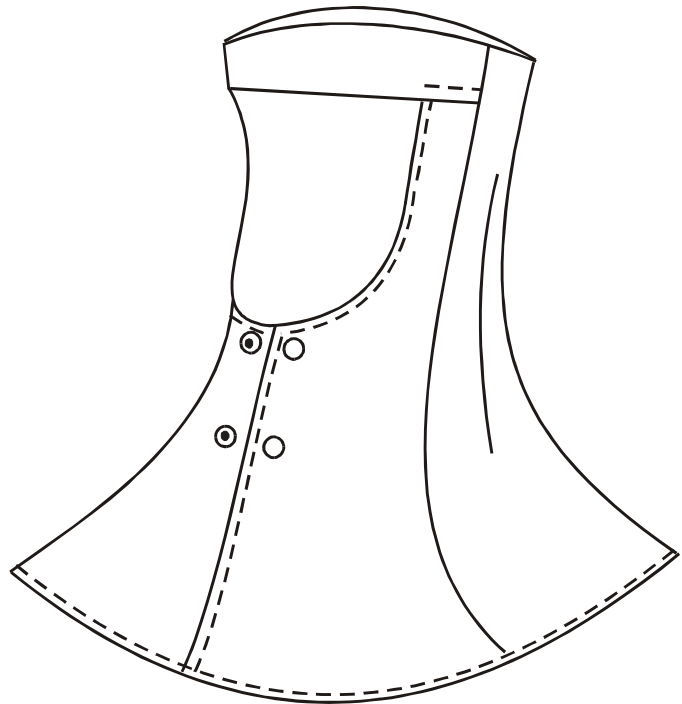
ESD WRIST



CLOSED COLLAR

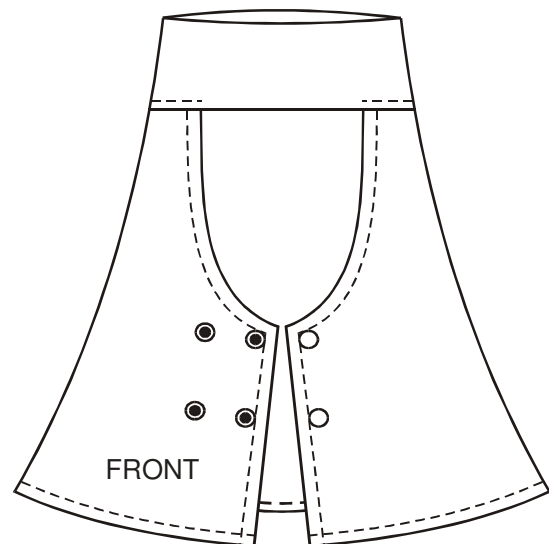
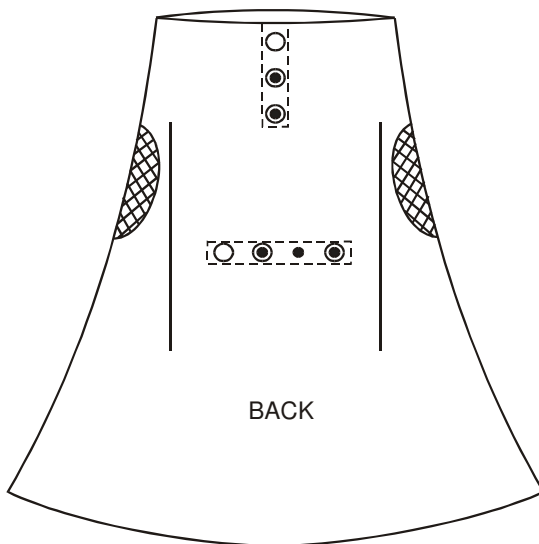
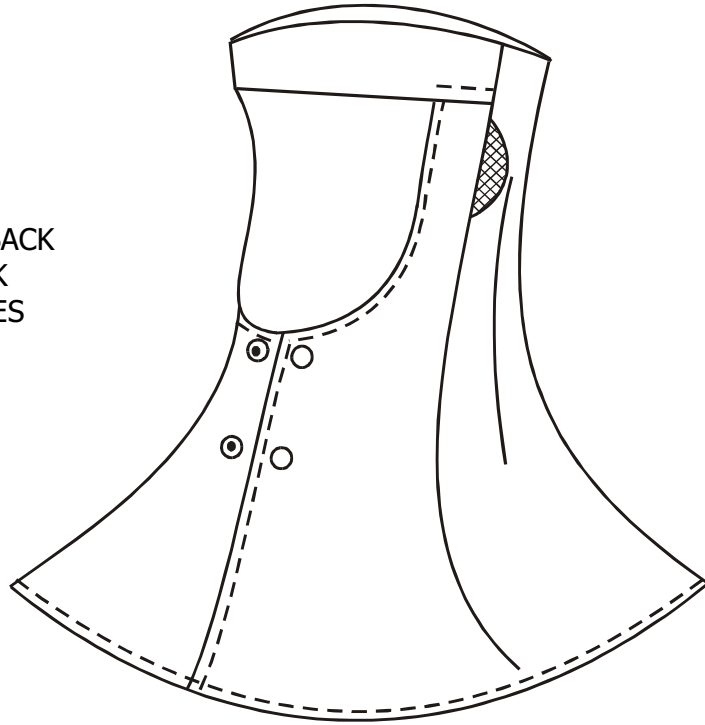
STH002

- STARLINE HOOD
- 2 STUD FRONT/
• HORIZONTAL STUD BACK
- VERTICAL STUD BACK



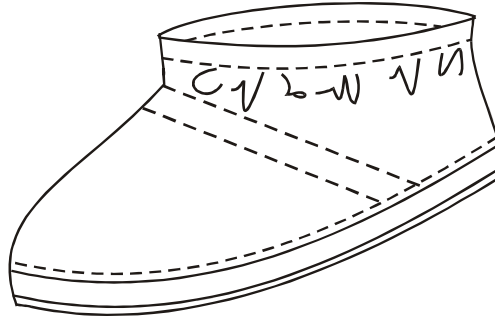
STH003

- STARLINE HOOD
- 2 STUD FRONT/
• HORIZONTAL STUD BACK
- VERTICAL STUD BACK
- HALF MESH EARPIECES



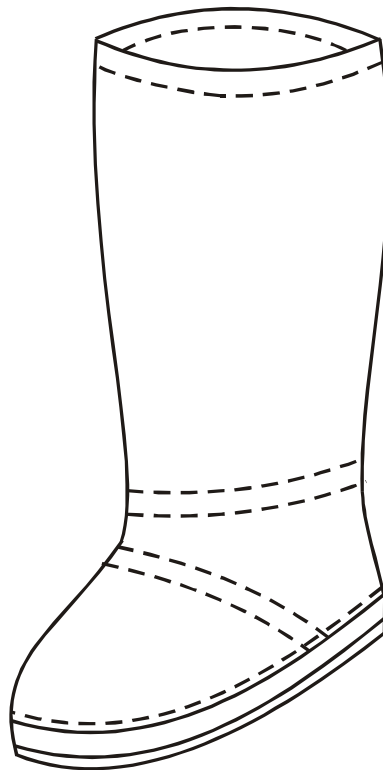
SKO001

- CREPE SOLE
- ELASTIC TOP
- ELASTIC BRIDGE



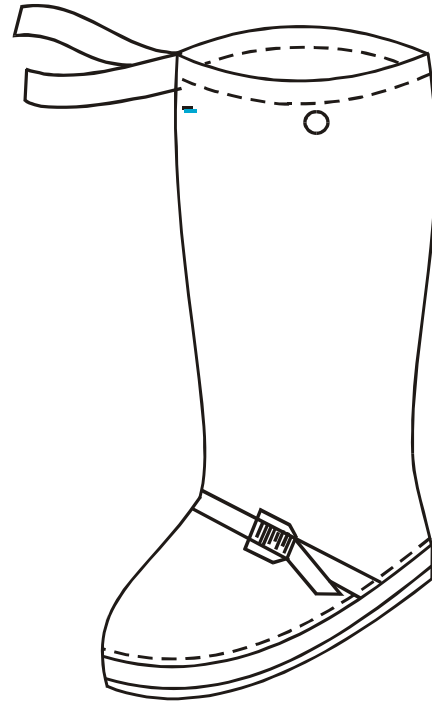
STO001

- CREPE SOLE
- ELASTIC TOP
- ELASTIC ANKLE
- ELASTIC BRIDGE



STO009

- TIE TAPE TOP
- BUCKLE ANKLE
- STUD FASTENING BRIDGE
- RE ENFORCED WEBBING ACROSS BOTTOM VENT
- SOLE REVERSING AN OPTION
- STUD TO ATTACH TO COVERALL



Data Sheet

NIK

Weave :	2/1 Twill 5mm grid
Weight (g/m ²) :	100
Filtration Efficiency :	≥ 0.3 μ = 90-93% ≥ 0.5 μ = 90-93%
Tensile Strength ASTM D 5034 (C.R.E.) Grad Method	Warp (KG) 108 Weft (KG) 64
Surface Resistivity (ohms) :	10 ⁶ 10 ⁶
Water Vapour Permeability JIS 1099 (g/m ² /sec) :	305
Air Permeability JIS-L 1099 cm ³ /cm ² /sec) :	3-4
Static Decay ASTM D 4238 (sec)	0.01

Data Sheet

P75D

Weave :	Taffeta (5mm grid)
Weight (g/m ²) :	88
Tensile Strength	Warp (KG) 64.7
ASTM D 5034 (C.R.E.) Grad Method	Weft (KG) 43.6
Water Vapour Permeability	14435
ASTM E 96-95 (g/m ² /24hr) :	
Air Permeability	21.6
ASTM D 737. Frazer Method)(cm ³ /cm ² /sec) :	
Water Absorption	28.1
(AATCC 70-1989)	

Data Sheet

6GL9

Specification

100% POLYESTER WOVEN FABRIC

58/60" (Shuttleless)

PD Finished

WP: Polyester D.T.Y. R/W SD 150/48 105E/inch
118gr/yd.

WT: Polyester D.T.Y. R/W SD 300/96 62P/inch
142g/yd.

Yarn weight: 260 gr/yd, Finishing materials:- 2gr/yd

Total weight:- 262 gr/yd

Data Sheet

VALON 9

Weave :	Taffeta (5mm grid)
Weight (g/m ²) :	132
Filtration Efficiency :	≥ 0.3 μ = 90-93%
	≥ 0.5 μ = 90-93%
Tensile Strength	Warp (KG) 83.00
ASTM D 5034 (C.R.E.) Grad Method	Weft (KG) 63.10
Surface Resistivity (ohms) :	10 ⁶ 10 ⁶
Water Vapour Permeability	6822.6
ASTM E 96-95 (g/m ² /24hr) :	
Air Permeability	2.7
ASTM D 737. Frazer Method)(cm ³ /cm ² /sec) :	
Static Decay ASTM D 4238 (sec)	0.01
Abrasion Resistance	420
ASTM D 3886, Universal Test , Diaphragm) cycle	

Data Sheet

ESD Rubber Grey

Commercial Name: ESD Rubber

Product Name: Diamond Slab

Chemical Family: Nitrile Rubber

Composition:

<u>Component</u>	<u>PHR</u>
NBR	100
Silica	25
SP3	30
Antistatic Agent	10
Curing Agent	2.5
Colour	0.5

Physical Data:

PH :	: N/A
T / S	: 12 Mpa
E / G	: >285%
ESD	: 10^8 10^{10}
S / G	: 1.32
Hardness	: 60 +/- 5 Shore A